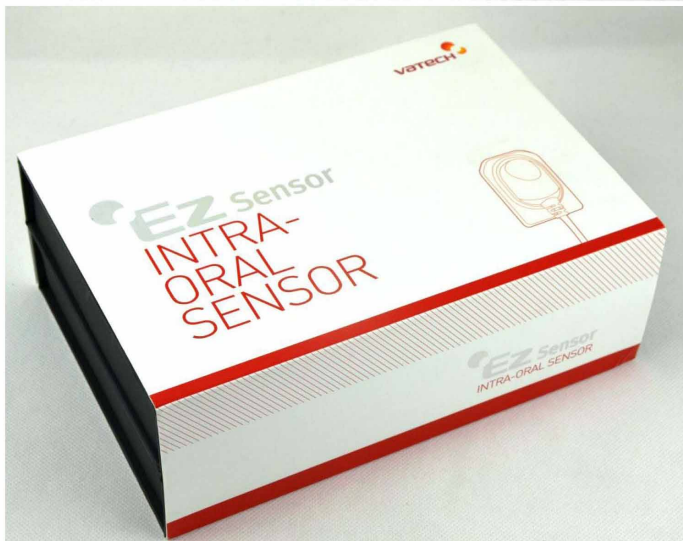


S802 Vatech Dental X-Ray Sensor



Specification:

Detector Structure: Low Noise Hybrid CMOS

Dimension: 29.2 x 38.7 x 4.9 mm

Pixel Pitch: 0.035 mm

Active Pixel Array: 686 x 944 pixels (24.01 x 33.04 mm)

Dynamic Range: 4096

Signal to Noise Ratio: >37dB

USB Cable length between Controller and PC: 3 m

Components:

1: Sensor Module

2: Control Box

3: USB Cable (3M)

4: Holder for Control Box

5: Holder for Sensor

6: EasyDent V4 Installation CD

7: Driver Installation CD

8: EzSensor Manual





Features

- Excellent image quality based on advanced COMS Technology
- Optimized sensor dimension for human oral structure
- USB 2.0 : interface

"System Configuration"

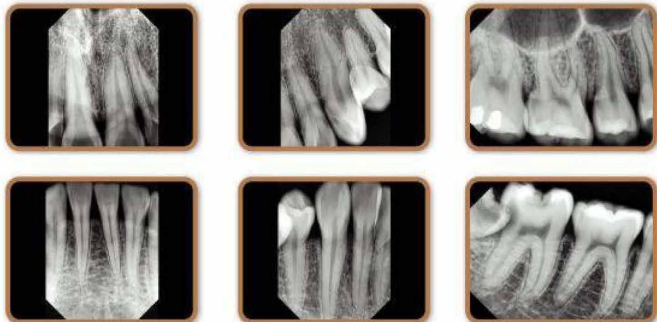


EzSensor (Image Sensor) → Control Box → EzDent (Software)

Kit Contents for E-WOO XCP-DS (Option)

Description	Qty.	Description	Qty.	Description	Qty.
Poster	1	Horiz. BW Sensor Basket	2	bw arm	1
Box	1	Vertical BW Sensor Basket	2	endo arm	1
7 x 8 bags	4	Vertical Endo Sensor Basket	2	posterior ring	2
Posterior Sensor Basket	2	posterior arm	2	anterior ring	1
Anterior Sensor Basket	2	anterior arm	1	bw ring	1
				endo ring	1

"Modern imaging solution"





EzX



Name : c ds
Chart : 000122
Age : 0 Gender : Male

Patient Information

